

Vision Coverage for Seniors

# Premiere Vision

Get vision coverage that can offer you savings on vital eye care, including exams and prescription glasses, benefits that are not included in your Original Medicare plan.



# Coverage for your vision care needs.

An annual eye exam is about much more than healthy vision. It can help identify the early signs of serious health conditions like diabetes and high blood pressure.

Our **Premiere Vision** plan offers access to **thousands of network providers nationwide** through EyeMed Vision Care's "Select" Network of independent providers and **retail chains**. Visit [EyeMedVisionCare.com/Locator](http://EyeMedVisionCare.com/Locator) for participating locations in your area.



## 1 in 3 adults

will have vision-reducing eye disease by the age 65<sup>1</sup>



## Overall health

can be adversely impacted by vision loss<sup>2</sup>



## Difficulty identifying

medications can have serious consequences<sup>3</sup>

## Premiere Vision At A Glance



100% coverage for routine eye exam<sup>4</sup>



Coverage is available for you and your spouse



Discounts on contact lenses and additional savings from EyeMed<sup>5</sup>  
Complements your Original Medicare insurance plan



Affordable premiums that don't increase as you age with individual coverage for \$10 per month



Large network of providers to choose from. For a list of participating providers, visit [EyeMedVisionCare.com](http://EyeMedVisionCare.com)

<sup>1</sup>[www.aafp.org/afp/1999/0701/p99.html](http://www.aafp.org/afp/1999/0701/p99.html) | <sup>2</sup>Centers for Disease Control and Prevention, National Center for Health Statistics, "Falls Among Persons Aged ≥65 Years With and Without Severe Vision Impairment – United States, 2014" May 2016 | <sup>3</sup>American Foundation<sup>®</sup> for the Blind, [www.afb.org/section.aspx?SectionID=68&TopicID=320&DocumentID=3374&rewrite=0](http://www.afb.org/section.aspx?SectionID=68&TopicID=320&DocumentID=3374&rewrite=0) | <sup>4</sup>Up to \$30 per insured, per 12 month period. | <sup>5</sup>EyeMed is a discount program only and not insurance.

INSURED VISION PLAN <sup>1</sup>	Network Provider	Non-Network Provider
Eye Exam	100% up to \$30, no copay (Member responsible for an additional \$10 out-of-pocket amount)	100% up to \$30, no copay (Member responsible for any amount over \$30)
Corrective Spectacle Lenses (in lieu of corrective contact lenses)	Standard uncoated plastic lenses, with \$10 copay <ul style="list-style-type: none"> <li>• Single Vision: 100% up to \$35</li> <li>• Bifocal: 100% up to \$55</li> <li>• Trifocal: 100% up to \$90</li> </ul>	Standard uncoated plastic lenses, with \$10 copay <ul style="list-style-type: none"> <li>• Single Vision: 100% up to \$35</li> <li>• Bifocal: 100% up to \$55</li> <li>• Trifocal: 100% up to \$90</li> </ul>
Frames (in lieu of corrective contact lenses)	\$10 copay up to \$120	\$10 copay up to \$100
Corrective Contact Lenses (in lieu of corrective spectacle lenses and frames)	\$10 copay up to \$120	\$10 copay up to \$120

## ADDITIONAL SAVINGS FROM EYEMED VISION CARE<sup>2</sup>

In addition to your insured vision plan benefits, you have access to the following discounts through EyeMed where you pay:

Frames	20% off balance over \$120 allowance
Contact Lenses, Non-Disposable	15% off balance over \$120 allowance
Additional Pairs Benefit	Members also receive a 40% discount off a complete pair of eyeglasses and a 15% discount off conventional contact lenses once the funded benefits have been used
Lens Options	<ul style="list-style-type: none"> <li>• Standard Polycarbonate: \$40</li> <li>• PRS Scratch Coat: \$15</li> <li>• Tints (Solid and Gradient): \$15</li> <li>• Standard UV Coating: \$15</li> <li>• Standard Anti-Reflective: \$45</li> <li>• Other Lens Options: 20% off retail</li> </ul>
Non-Scheduled Items	20% off retail
LASIK or PRK Vision Correction	15% off retail or 5% off promotional price

## MONTHLY PREMIUMS

<b>Individual</b>	<b>\$10<sup>00</sup></b>
<b>Two Persons</b>	<b>\$18<sup>00</sup></b>

The chart above is only an illustration of benefit and premium options per insured per 12 month period. | For a list of participating providers, visit [EyeMedVisionCare.com](http://EyeMedVisionCare.com) and choose the "Select" network | <sup>1</sup>Per insured, per 12 month period | <sup>2</sup>EyeMed is a discount program only and not insurance. This program provides discounts only at certain contracted providers. You are obligated to pay all fees at the time of service, but will receive a discount from those providers who have contracted with EyeMed. The program does not make payments directly to the providers of services.

For a complete listing of benefits, exclusions and limitations, please refer to your Policy. In the event of any discrepancies contained in this brochure, the terms and conditions contained in the Policy documents shall govern. The information contained herein is accurate at the time of publication. This brochure provides only summary information. Vision Insurance Preferred Provider Organization (PPO) Policy, Form CH-26120-IP (01/12) OON ME.

### Exclusions and Limitations from EyeMed:

Orthoptic or vision training, subnormal vision aids, and any associated supplemental testing | Aniseikonic lenses | Medical and/or surgical treatment of the eye, eyes or supporting structures | Corrective eye wear required by an employer as a condition of employment, and safety eye wear unless specifically covered under plan | Services provided as a result of any Workers' Compensation Law | Plano non-prescription lenses and non-prescription sunglasses (except for 20% discount) | Services or materials provided by any other group benefit providing for vision care | Two pair of glasses in lieu of bifocals or trifocals.

## Notice to Our Customers About Supplemental Insurance

- The supplemental plan discussed in this document is separate from any health insurance coverage you may have purchased with another insurance company.
- This plan provides optional coverage for an additional premium. It is intended to supplement your health insurance and provide additional protection.
- This plan is not required in order to purchase health insurance with another insurance company.
- This plan should not be used as a substitute for comprehensive health insurance coverage. It is not considered Minimum Essential Coverage under the Affordable Care Act.



## IMPORTANT NOTICE TO PERSONS ON MEDICARE. THIS IS NOT MEDICARE SUPPLEMENT INSURANCE.

**Some health care services paid for by Medicare may also trigger the payment of benefits under the Policy.**

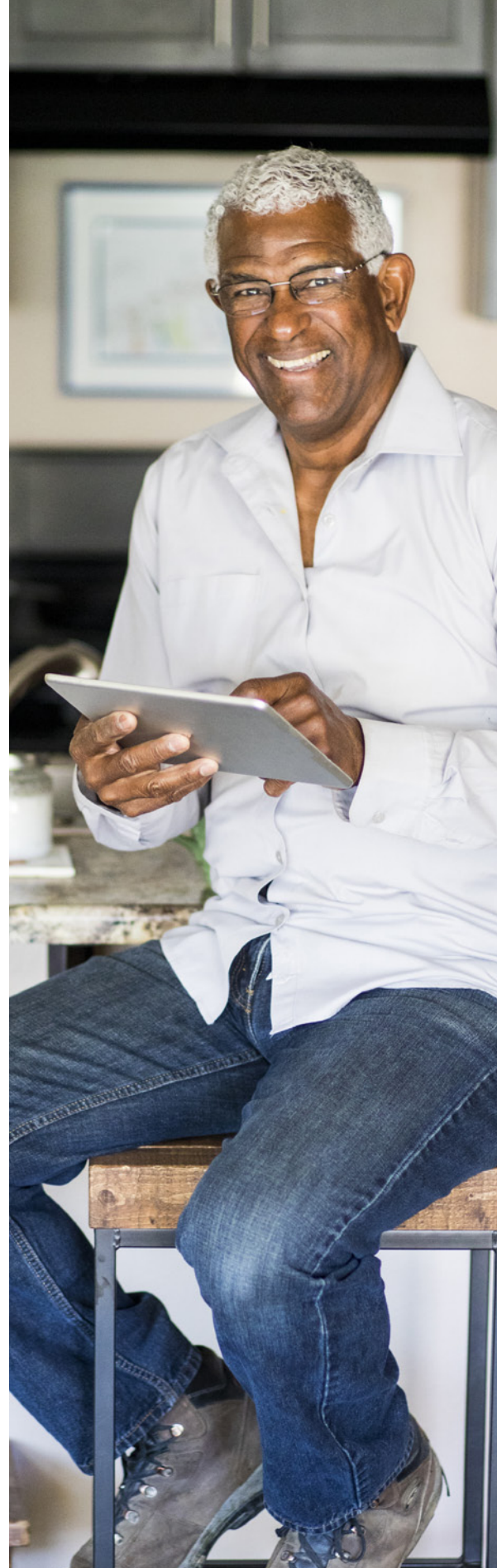
This insurance provides limited benefits, if you meet the policy conditions, for expenses relating to the specific services listed in the policy. It does not pay your Medicare deductibles or coinsurance and is not a substitute for Medicare Supplement insurance.

**Medicare pays extensive benefits for medically necessary services regardless of the reason you need them. These include:**

- Hospitalization
- Physician services
- Outpatient prescription drugs if you are enrolled in Medicare Part D
- Other approved items and services

### BEFORE YOU BUY THIS INSURANCE

- ✓ Check the coverage in **all** health insurance policies you already have.
- ✓ For more information about Medicare and Medicare Supplement insurance, review the *Guide to Health Insurance for People with Medicare*, available from the insurance company.
- ✓ For help in understanding your health insurance, contact your state insurance department or state health insurance assistance program (SHIP).



**THE CHESAPEAKE LIFE INSURANCE COMPANY®**

A Stock Company

(Hereinafter called: the Company, We, Our or Us)

Home Office: Oklahoma City, Oklahoma

Administrative Office: P.O. Box 982010

North Richland Hills, Texas 76182-8010

Customer Service: 1-800-815-8535

**VISION INSURANCE  
PREFERRED PROVIDER ORGANIZATION (PPO) POLICY**

**OUTLINE OF COVERAGE FOR FORM: CH-26120-IP (01/12) OON ME**

THIS IS NOT A MEDICARE SUPPLEMENT POLICY. If You are eligible for Medicare, review the Guide to health Insurance for People With Medicare available from the Company.

- 1. **READ YOUR POLICY CAREFULLY!** This Outline of Coverage provides a very brief description of some of the important features of Your Policy. This is not the insurance contract and only the actual Policy provisions will control. The Policy itself sets forth, in detail, the rights and obligations of both You and Us. It is, therefore, important that You **READ YOUR POLICY CAREFULLY**.
- 2. **VISION INSURANCE POLICY** – The Policy is designed to provide You or Your Covered Dependents with coverage when certain losses are incurred for vision services and supplies. Coverage is provided for the benefits described in the BENEFITS section below. The benefits described may be limited as outlined in the EXCLUSIONS & LIMITATIONS section.
- 3. **BENEFITS** – While the Policy is in force, Covered Expenses include the fees associated with the Vision Care services and supplies shown below when provided by an authorized provider (i.e., ophthalmologist, optometrist, or optical dispensary). Payment of benefits for any such service or supply will be made in accordance with the specified Benefit Payment Rate and any Deductible and Copayment Amounts shown below. The Benefit Payment Rate is the maximum amount of Covered Expenses We will pay for each occurrence or purchase of a supply or service. Any Deductible Amounts and/or Copayments will be applied first and then the Benefit Payment Rate will be applied.

Deductible (per Insured Person, per calendar year): \$0

**BENEFITS**

**BENEFIT PAYMENT RATE**

**NETWORK PROVIDER**

**NON-NETWORK PROVIDER**

**Comprehensive Eye Examination**

100% up to \$30

100% up to \$30

*(Limited to one Comprehensive Eye Examination every 12 months from last date of service, per Insured Person.)*

**Corrective Spectacle Lenses**

**(standard, uncoated plastic lenses)**

*(In lieu of corrective contact lenses; limited to one purchase every 12 months from last date of service, per Insured Person.)*

**Copayment (per Insured Person):** \$10

Single Vision Lenses

100% up to \$35

100% up to \$35

Bifocal Lenses

100% up to \$55

100% up to \$55

Trifocal Lenses

100% up to \$90

100% up to \$90

**BENEFITS****BENEFIT PAYMENT RATE**

	<u>NETWORK PROVIDER</u>	<u>NON-NETWORK PROVIDER</u>
<b>Frames</b>	100% up to \$120	100% up to \$100
<i>(In lieu of corrective contact lenses; limited to one purchase every 12 months from last date of service, per Insured Person.)</i>		
<b>Copayment (per Insured Person):</b>	\$10	
<b>Corrective Contact Lenses</b>		
<i>(In lieu of Corrective Spectacle Lenses and Frames; limited to one purchase every 12 months from last date of service, per Insured Person.)</i>		
<b>Copayment (per Insured Person):</b>	\$10	
Non-disposable	100% up to \$120	100% up to \$120
Disposable	100% up to \$120	100% up to \$120
Therapeutic	100% up to \$120	100% up to \$120
<b>Contact Lens Fitting</b>	Not Covered	Not Covered
<b>Follow-Up Visits</b>	Not Covered	Not Covered

**4. EXCLUSIONS & LIMITATIONS** – Benefits will not be provided under the Policy for expenses associated with the following:

1. Orthoptic or vision training and any associated supplemental testing;
2. Plano lenses;
3. Lens coating;
4. Two pair of glasses, in lieu of bifocals or trifocals;
5. Medical or surgical treatment of the eyes;
6. Any type of corrective vision surgery, including LASIK surgery;
7. Any eye examination, or any corrective eyewear, required by an employer as a condition of employment;
8. Any services or supplies when paid under any Worker's Compensation or similar law;
9. No-line bifocal or progressive lenses;
10. Photo-chromic, transition, or polycarbonate lenses;
11. Lenticular lenses;
12. Sub-normal vision aids or non-prescription lenses;
13. Services rendered or supplies purchased outside the U.S. or Canada, unless the Insured Person resides in the U.S. or Canada and the charges are incurred while on a business or pleasure trip;
14. Eyeglasses when the change in prescription is less than .5 Diopter;
15. Experimental or investigational or non-conventional treatment or device;
16. Eyeglass lens treatments, including "add-ons", UV coating, anti-reflective coating, scratch resistant coating, tinting, or edge polishing;
17. Oversized lenses;
18. High index lenses of any material type;
19. Fitting for contact lenses;
20. Follow-up visits; or
21. Charges incurred after the Policy has terminated or coverage has ended.

**5. RENEWABILITY** – The Policy is guaranteed renewable, subject to the Company's right to discontinue or terminate the coverage as provided in the TERMINATION OF COVERAGE section of the Policy. The Company reserves the right to change the applicable table of premium rates on a Class Basis.

**6. BEGINNING OF COVERAGE** – We require evidence of insurability before coverage is provided. Once We have approved Your application based upon the information You provided therein, the Effective Date of Coverage for You and those Eligible Dependents listed in the application and accepted by Us will be the Policy Date shown in the POLICY SCHEDULE.

**7. TERMINATION OF COVERAGE –**

**You**

Your coverage will terminate and no benefits will be payable under the Policy and any attached Riders:

1. At the end of the period for which premium has been paid;
2. If Your mode of premium is monthly, at the end of the period through which premium has been paid following Our receipt of Your request of termination;
3. If Your mode of premium is other than monthly, upon the next monthly anniversary day following Our receipt of Your request of termination. Premium will be refunded for any amounts paid beyond the termination date;
4. On the date of fraud or misrepresentation by You;
5. On the date We elect to discontinue this plan or type of coverage;
6. On the date We elect to discontinue all coverage in Your state; or
7. On the date an Insured Person is no longer a permanent resident of the United States.

**Covered Dependents**

Your Covered Dependent's coverage will terminate under the Policy on:

1. The date Your coverage terminates, except as provided under the SPECIAL CONTINUATION FOR DEPENDENTS provision;
2. The date such dependent ceases to be an Eligible Dependent; or
3. The date We receive Your written request to terminate a Covered Dependent's coverage.

The attainment of the Limiting Age for an Eligible Dependent will not cause coverage to terminate while that person is and continues to be both:

1. Incapable of self-sustaining employment by reason of mental retardation or physical handicap; and
2. Chiefly Dependent on You for support and maintenance. For the purpose of this provision "Chiefly Dependent" means the Eligible Dependent receives the majority of his or her support from You.

We will require that You provide proof that the dependent is in fact a disabled and dependent person at least 31 days prior to the date upon which the dependent would otherwise reach the Limiting Age, and thereafter We may require such proof not more frequently than annually. In the absence of such proof, We may terminate the coverage of such person after the attainment of the Limiting Age.

**8. PREMIUMS** – We reserve the right to change the table of premiums, on a Class Basis, becoming due under the Policy at any time and from time to time; provided, We have given the Insured Person written notice of at least 60 days prior to the effective date of the new rates. Such change will be on a Class Basis.

Premium Due (at time of application) \$ \_\_\_\_\_







**Navigate Life's Twists & Turns**  
with the SureBridge portfolio of supplemental  
and life insurance products

**Accident | Dental | Disability | Fixed Indemnity  
Illness | Life | Metal Gap | Vision**

**SureBridgeInsurance.com  
(800) 815-8535**

Weekdays 8:00 a.m. to 5:00 p.m. in all time zones



## About Us

SureBridge is one of the leading brands of supplemental insurance coverage in the United States, helping to provide financial security for Americans of all ages and their families. Our comprehensive portfolio of products is available from licensed insurance agents in 46 states and the District of Columbia and is available through HealthMarkets Insurance Agency Inc., as well as through other unaffiliated insurance distributors. SureBridge policyholders can receive direct cash benefits for expenses caused by unexpected medical issues, sustained illnesses, and end-of-life challenges.

The SureBridge portfolio includes dental, vision, and other insurance plans that complement an individual's health insurance. These plans help provide an additional layer of protection in the event of accidental injury, catastrophic illness, hospitalization, or cancer.

SureBridge® is a registered trademark used for both insurance and non-insurance products offered by subsidiaries of HealthMarkets, Inc. Supplemental and life insurance products are underwritten by The Chesapeake Life Insurance Company®. Administrative offices are located in North Richland Hills, TX. Products are marketed through independent agents/producers. Insurance product availability may vary by state.

